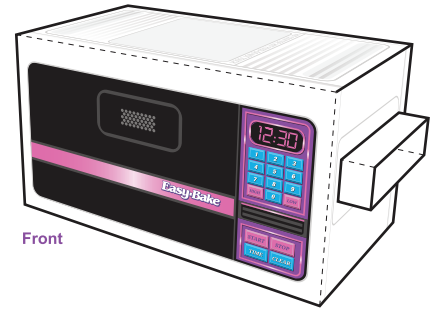
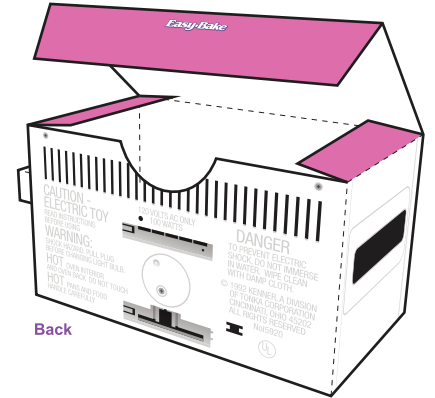




- 1 Download and print this template on card stock (thick paper).
- 2 Use an xacto-type knife to carefully cut along the solid black outlines.
- 3 Fold along all of the dashed lines.
- 4 Use double-sided tape or a glue stick to attach white tabs to the insides of the sections.
- 5 Connect separate parts together using square tabs and cut slits.
- 6 Use finished Easy-Bake Oven as a box to keep or gift sweet treats!

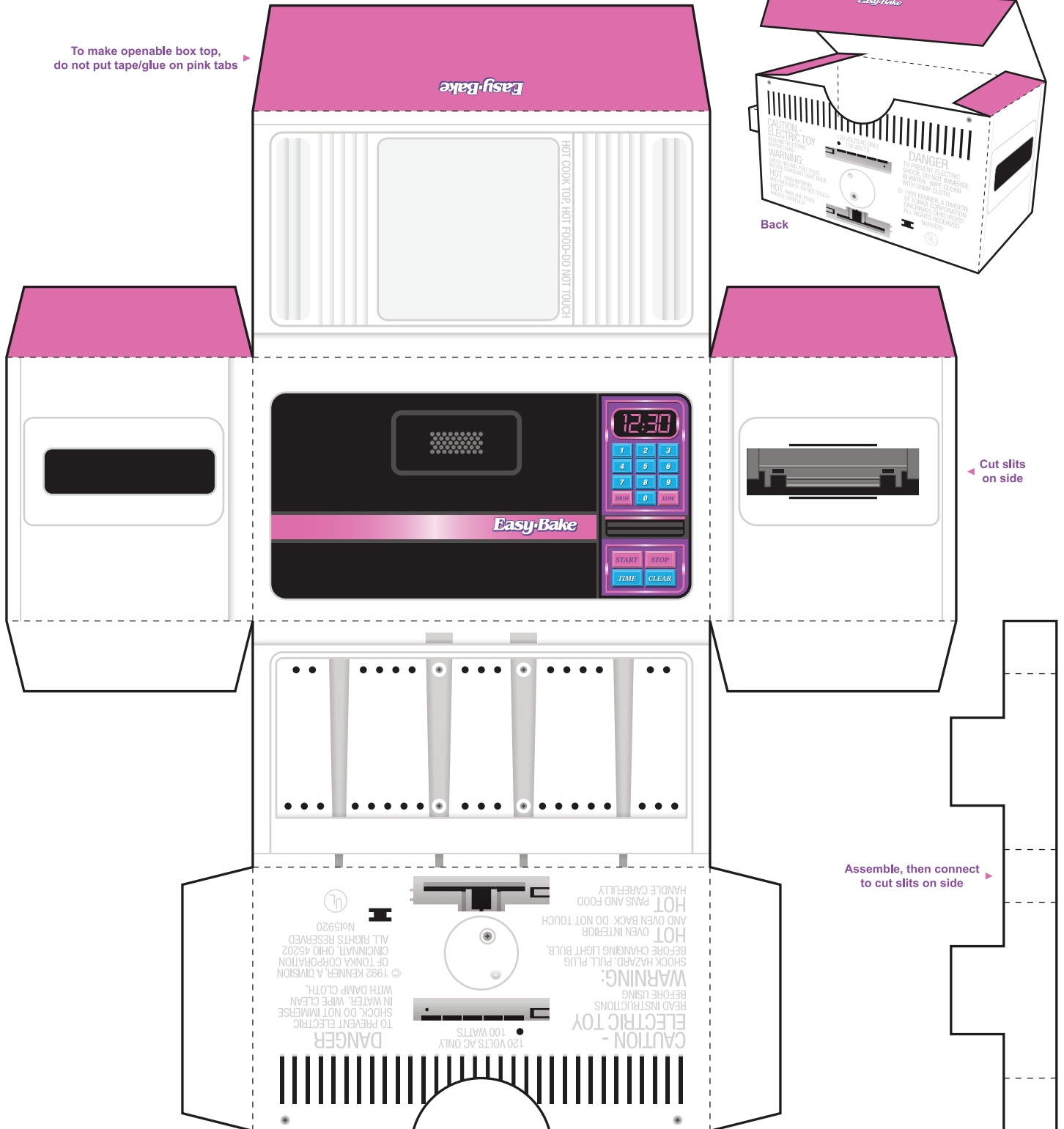


Front



Back

To make openable box top, do not put tape/glue on pink tabs



Cut slits on side

Assemble, then connect to cut slits on side