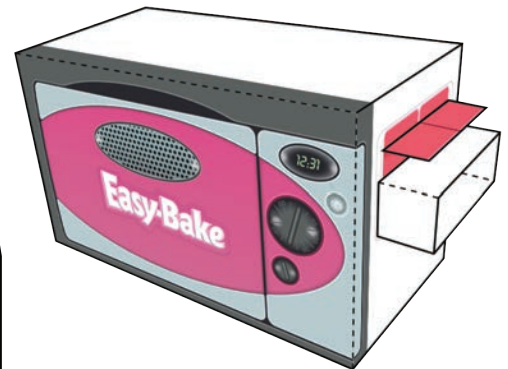


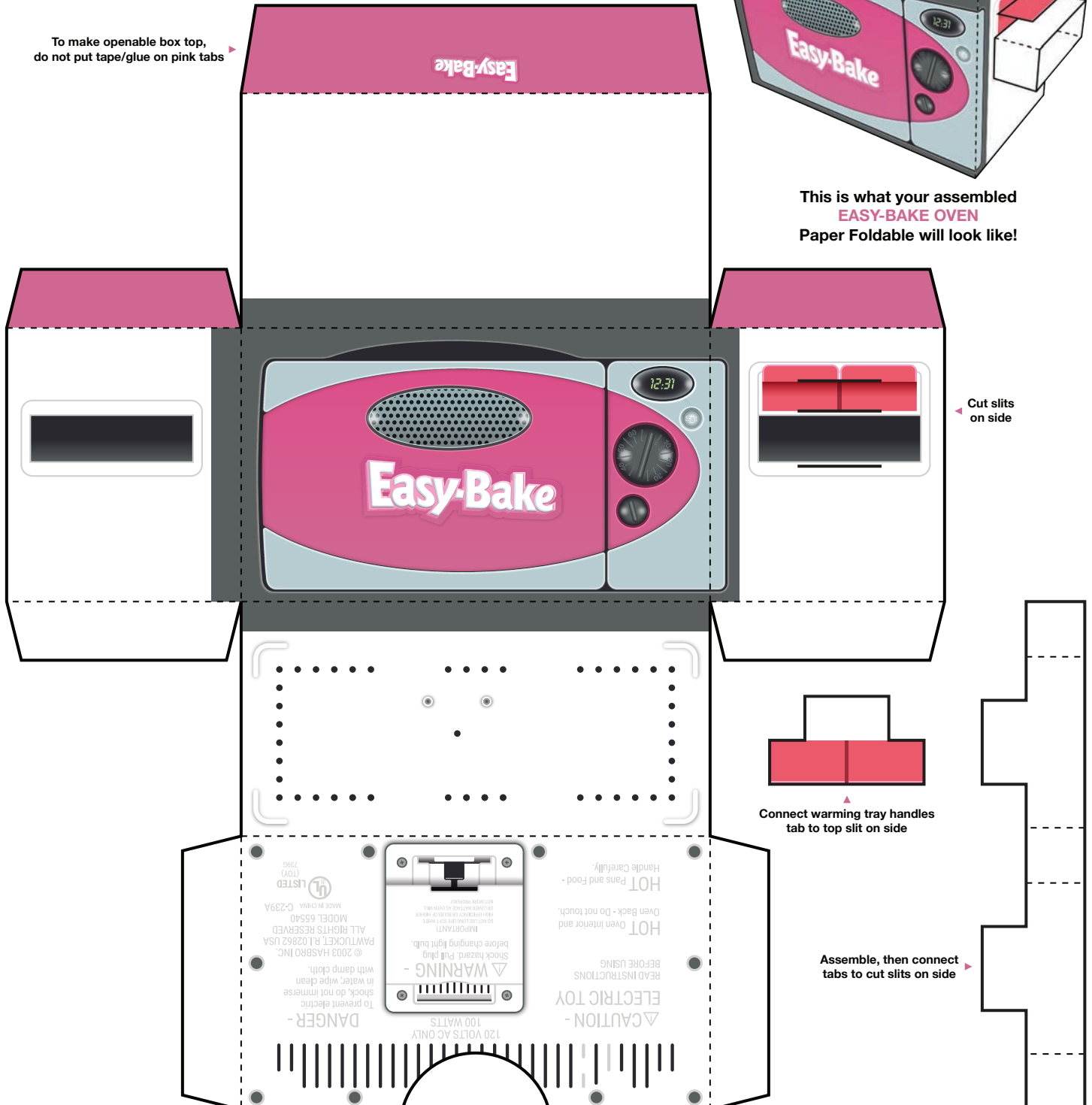


1. Download and print this template on card stock (thick paper).
2. Use an xacto-type knife to carefully cut along the solid black outlines.
3. Fold along all of the dashed lines.
4. Use double-sided tape or a glue stick to attach white tabs to the insides.
5. Connect separate parts together using square tabs and cut slits.
6. Use finished Easy-Bake Oven as a box to keep or gift sweet treats!

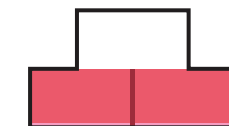


This is what your assembled
EASY-BAKE OVEN
 Paper Foldable will look like!

To make openable box top,
 do not put tape/glue on pink tabs



Cut slits
 on side



Connect warming tray handles
 tab to top slit on side

Assemble, then connect
 tabs to cut slits on side